

**U-R-B-A-N**

Trust. Right from the start!

# DGL 200

Double mitre saw



# Our know-how is your advantage

## DGL 200 - Double mitre saw

precision, no-burr cutting of Aluminium and PVC-Profiles

- increased operational convenience
- high quality of cutting
- efficient and monitored waste disposal; waste conveyor belts (optional)
- Double mitre saws with various features. With this series, all production requirements can easily be taken care of.

DGL 200-M easy manual length adjustment, left aggregate fixed, right aggregate moveable

DGL 200-E with electronic positioning control and electro pneumatic aggregate adjustment (optional)



E 500

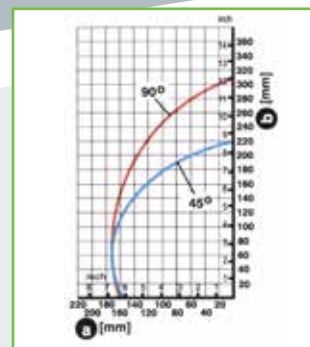
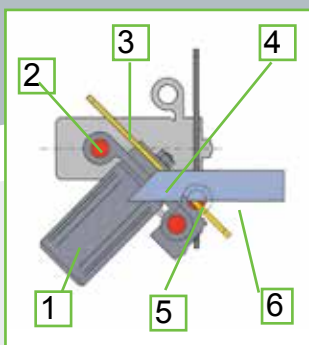


PCE 5000  
optional with printer



### Important advantages:

- 1 - maximum driving power
- 2 - highest possible precision
- 3 - top cutting quality
- 4 - safety
- 5 - angular accuracy
- 6 - no profile damages


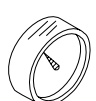


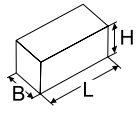
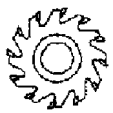


a Profile width  
b Profile height



**DGL 200-M**

Cutting lengths:  
3700 mm  
5100 mm  
6100 mm

 1260 kg	 7 bar	 2 x 3 kW
 <p>230/400 V 50-60 HZ L1-L2-L3-N-PE 6 kW</p>	 <p>L = 5500 mm/6900 mm/ 7500 mm (je nach Schnittlänge) B = 1160 mm H = 1885 mm</p>	 Ø = 500 mm

Technical data apply to basic machine without options

Urban GmbH & Co. Maschinenbau KG • Dornierstraße 5 • DE-87700 Memmingen  
Tel.: +49 (0)8331 858-0 • Fax: +49 (0)8331 858-58 • e-mail: urban@u-r-b-a-n.com  
<http://www.u-r-b-a-n.com>