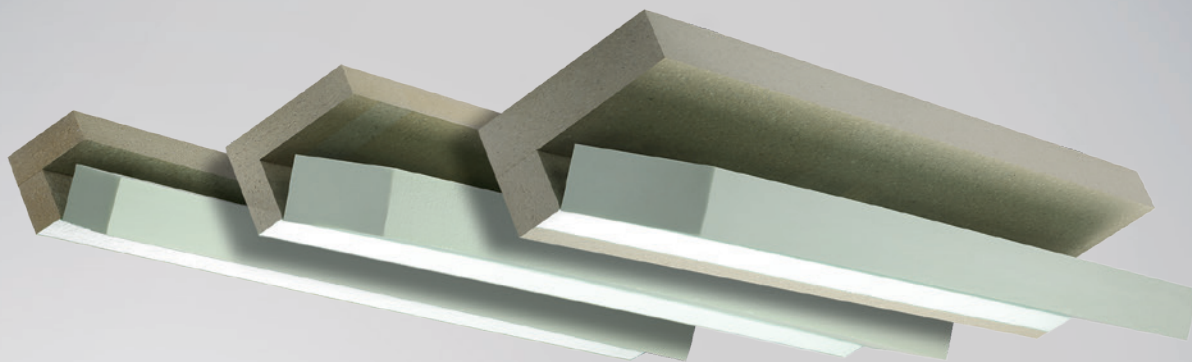


PRODUCT DATA SHEET

IN FRONT OF WALL INSTALLATION SYSTEM ISO-TOP WINFRAMER „TYPE 1“



PRODUCT DESCRIPTION

The IN FRONT OF WALL INSTALLATION SYSTEM ISO-TOP WINFRAMER „TYPE 1“ makes it possible to position and fit windows within the insulation plane. The IN FRONT OF WALL INSTALLATION SYSTEM ISO-TOP WINFRAMER „TYPE 1“ comprises a thermally insulating and load-bearing system angle made of PURATHERM which is equipped with a highly thermally insulating core. The thermally insulating core is connected to the system angle by means of a hinged mechanism. The advantage of this is that the insulating core can simply be moved out of the way while mechanically securing with screws.

System boards are also available for applications where the window is only partially overhanging. In addition, the system brackets can be combined with the system boards to achieve greater overhangs. ISO-TOP WINFRAMER SYSTEM BRACKETs and SYSTEM BOARDs are prefabricated in many different formats and can be cut to length on site using a mitre saw. Attachment to the masonry is by means of ISO-TOP FLEX-ADHESIVE WF and additional attachment using screws (not included in the range).

APPLICATION

The system brackets and boards are suitable for bearing the loads of windows and doors and provide an optimum base for sealing window connection joints.

PRODUCT ADVANTAGES

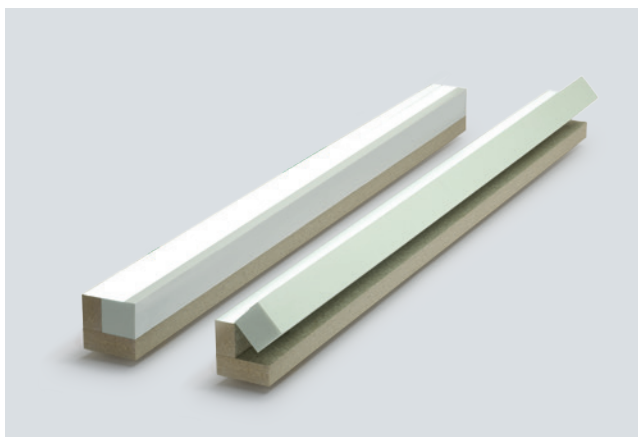
- windows can be fitted on the outer thermal insulation level
- integrated thermal insulation core (system brackets)
- simple adjustment of length using standard mitre saws
- reduction of structure-related thermal bridges
- simple installation thanks to the convenient insertion system
- complies with the EnEV requirements, RAL window installation principals and the UK Building Regulations
- can be combined with the system products of the ISO³-WINDOW SEALING SYSTEM
- can be directly plastered over
- can be combined with the IN FRONT OF WALL INSTALLATION SYSTEM ISO-TOP WINFRAMER „TYPE 2“

The window and door elements are attached directly and mechanically to the supporting frame system. This is possible with both classic screw fixings through the window frame, or with extended metal lug fixings. The in front of wall installation system is then covered by either an External Wall Insulation system, or rain screen facade of whatever type is designed. The integrated thermal core of the system together with the solid installation frame guarantee an optimum Ψ -value.



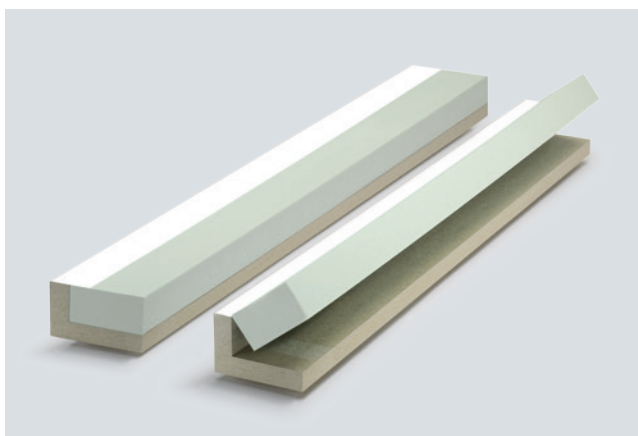
IN FRONT OF WALL INSTALLATION SYSTEM ISO-TOP WINFRAMER „TYPE 1“

SYSTEM COMPONENTS



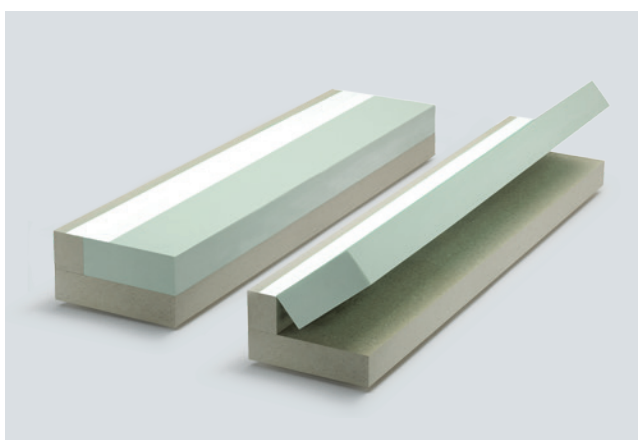
ISO-TOP WINFRAMER SYSTEM BRACKET 80/80, 90/80

The system bracket 80/80 resp. 90/80 is available for typical in front of wall installations. The ISO-TOP WINFRAMER SYSTEM BRACKETs 80/80 resp. 90/80 are suitable whenever windows are fitted in the direct transition area between the wall and the External Wall Installation system. With its 80 mm resp. 90 mm width dimension it has been adapted to standard window systems. The fixing areas guarantee a straightforward, fast and reliable window installation.



ISO-TOP WINFRAMER SYSTEM BRACKET 140/90

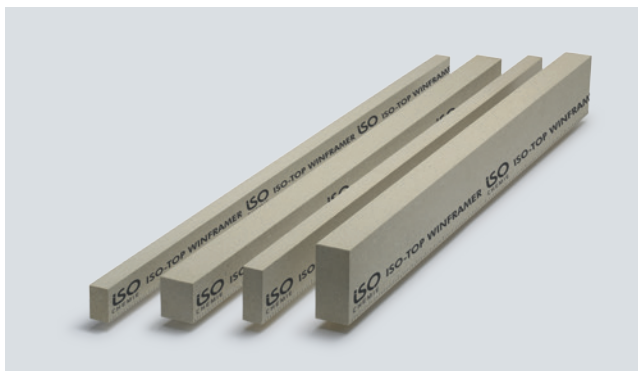
With an extension of 60 mm, the ISO-TOP WINFRAMER SYSTEM BRACKET 140/90 is designed for deeper window profiles, or for use with combination products such as roller shutters etc. These additional products can be fitted within the depth of the ISO-TOP WINFRAMER SYSTEM BRACKET so the perimeter seals are all at the same plane. The sealing can be done within the system bracket level, as planned.



ISO-TOP WINFRAMER SYSTEM BRACKET 160/110, 180/110, 200/110

The ISO-TOP WINFRAMER SYSTEM BRACKETs with a maximum projection of 200 mm can be used for cavity wall structures with brick facades. This system component is available for especially large projections of 160, 180 and 200 mm. Thermal insulating layers are becoming thicker not only where External Wall Insulation (EWI) systems are used, but also on buildings with assorted rainscreen facades, such as brick, etc. As with the EWI finish the ISO-TOP WINFRAMER SYSTEM BRACKET should be attached to the front of the load bearing wall.

IN FRONT OF WALL INSTALLATION SYSTEM ISO-TOP WINFRAMER „TYPE 1“



ISO-TOP WINFRAMER SYSTEM BOARDS

The system boards in the IN FRONT OF WALL INSTALLATION SYSTEM ISO-TOP WINFRAMER „TYPE 1“ offer a range of different application options. ISO-TOP WINFRAMER SYSTEM BOARDS are also available for applications where the window is only partially overhanging with some External Wall Insulation systems. In addition, the system brackets can be combined with the system boards to achieve greater overhang.



SYSTEM ADHESIVE ISO-TOP FLECKLEBER WF

ISO-TOP FLEX-ADHESIVE WF is a high-quality, neutral cure, single-component, permanently flexible adhesive on a hybrid-polymer basis. It was developed especially for gluing the IN FRONT OF WALL INSTALLATION SYSTEMS ISO-TOP WINFRAMER and makes tension-free structural bonding of the system possible. ISO-TOP FLEX-ADHESIVE WF is also used for sealing and bonding corner connections and can be used on damp surfaces. Refer to the ISO-TOP FLEX-ADHESIVE WF product data sheet for further information.



PROCESSING

The IN FRONT OF WALL INSTALLATION SYSTEM ISO-TOP WINFRAMER „TYPE 1“ is sealed to the masonry using ISO-TOP FLEX-ADHESIVE WF. This can also be used for optimum sealing of the material joints and corners. The use of further ISO³-WINDOW SEALING SYSTEM products is recommended for seals between the window and the in front of wall installation system. More detailed processing information can be found in the installation instructions.

ISO-TOP WINFRAMER INSERTION SYSTEM

ISO-TOP WINFRAMER SYSTEM BRACKETS are equipped with a convenient insertion system as standard. The tongue and groove design allows the ends of system brackets to be fitted together easily and quickly. System joints are glued using ISO-TOP FLEX ADHESIVE WF. The practical insertion system makes installation significantly easier on long rows of windows, allowing work to be mastered professionally by a single person. In addition, the insertion system makes levelling of the system brackets to be installed easier, enhancing the attractive appearance and technical installation quality.

IN FRONT OF WALL INSTALLATION SYSTEM ISO-TOP WINFRAMER „TYPE 1“

Technical data:	Standard	Classification
ISO-TOP WINFRAMER SYSTEM BRACKETS and SYSTEM BOARDS:		
Material description (PURATHERM)		PUR composite
Colour		beige
Building material class	DIN EN 13501-1	E
Building material approval		Z-23.11-2014
Thermal conductivity	DIN EN 12667	$\lambda = 0.096 \text{ W}/(\text{m} \cdot \text{K})$
Average U-value: finish 80/80		$0.51 \text{ W}/(\text{m}^2 \cdot \text{K})$
Average U-value: finish 140/90		$0.27 \text{ W}/(\text{m}^2 \cdot \text{K})$
Average U-value: finish 200/110		$0.20 \text{ W}/(\text{m}^2 \cdot \text{K})$
Sound insulation		depending on the sound insulation class of the construction element / window up to 50 dBA in the joint
Temperature resistance		-50°C to +100°C
Ageing resistance		resistant to rotting, non-rotting
Humidity resistance		high humidity resistance / resistant to mould and termites
Dimensional stability		high dimensional stability even with natural weathering
Load transfer		200 kg/m depending on wall substrate and projection*
Storage time (system brackets, system boards and insulating core)		24 months
ISO-TOP WINFRAMER INSULATING CORE:		
Material description		XPS insulating core
Building material class	DIN 4102	B1
Thermal conductivity	DIN EN 12667	$\lambda = 0.034 \text{ W}/(\text{m} \cdot \text{K})$
Resistance		usual construction materials, except solvents

* Our ISO-TOP WINFRAMER STATIC-TOOL is available for detailed preliminary dimensioning.

DELIVERY RANGE

	Length	Width	Height	Load transfer
ISO-TOP WINFRAMER SYSTEM BRACKET 80/80	1,200 mm	80 mm	80 mm	200 kg/m
ISO-TOP WINFRAMER SYSTEM BRACKET 90/80	1,200 mm	90 mm	80 mm	200 kg/m
ISO-TOP WINFRAMER SYSTEM BRACKET 140/90	1,200 mm	140 mm	90 mm	200 kg/m
ISO-TOP WINFRAMER SYSTEM BRACKET 160/110	1,200 mm	160 mm	110 mm	200 kg/m
ISO-TOP WINFRAMER SYSTEM BRACKET 180/110	1,200 mm	180 mm	110 mm	200 kg/m
ISO-TOP WINFRAMER SYSTEM BRACKET 200/110	1,200 mm	200 mm	110 mm	200 kg/m
ISO-TOP WINFRAMER SYSTEM BOARDS	width/height: 30/50; 30/60; 30/80; 30/90; 50/60; 50/80 and 50/110 mm; length: 1,200 mm			
ISO-TOP FLEX-ADHESIVE WF	for fixing on the wall and sealing the system joints			